

Appendix - Chorley

Located in Central Lancashire, Chorley occupies a prime strategic location. The proximity of three motorways, rail connections into Manchester and nearby access to services along the West Coast Mainline have together helped to facilitate economic growth in Chorley for a number of years. The rural areas of the authority are particularly sought after as commuter locations with the countryside to the east of Chorley forming part of the West Pennine Moors.

Chorley has enjoyed strong growth during recent years and the challenge is to maintain this growth without a corresponding increase in congestion.

The extensive housing, business and other developments that have been taking place at the strategic employment site, Buckshaw Village, on the substantial former Royal Ordnance site to the north of Chorley, provide an additional stimulus to the local economy.

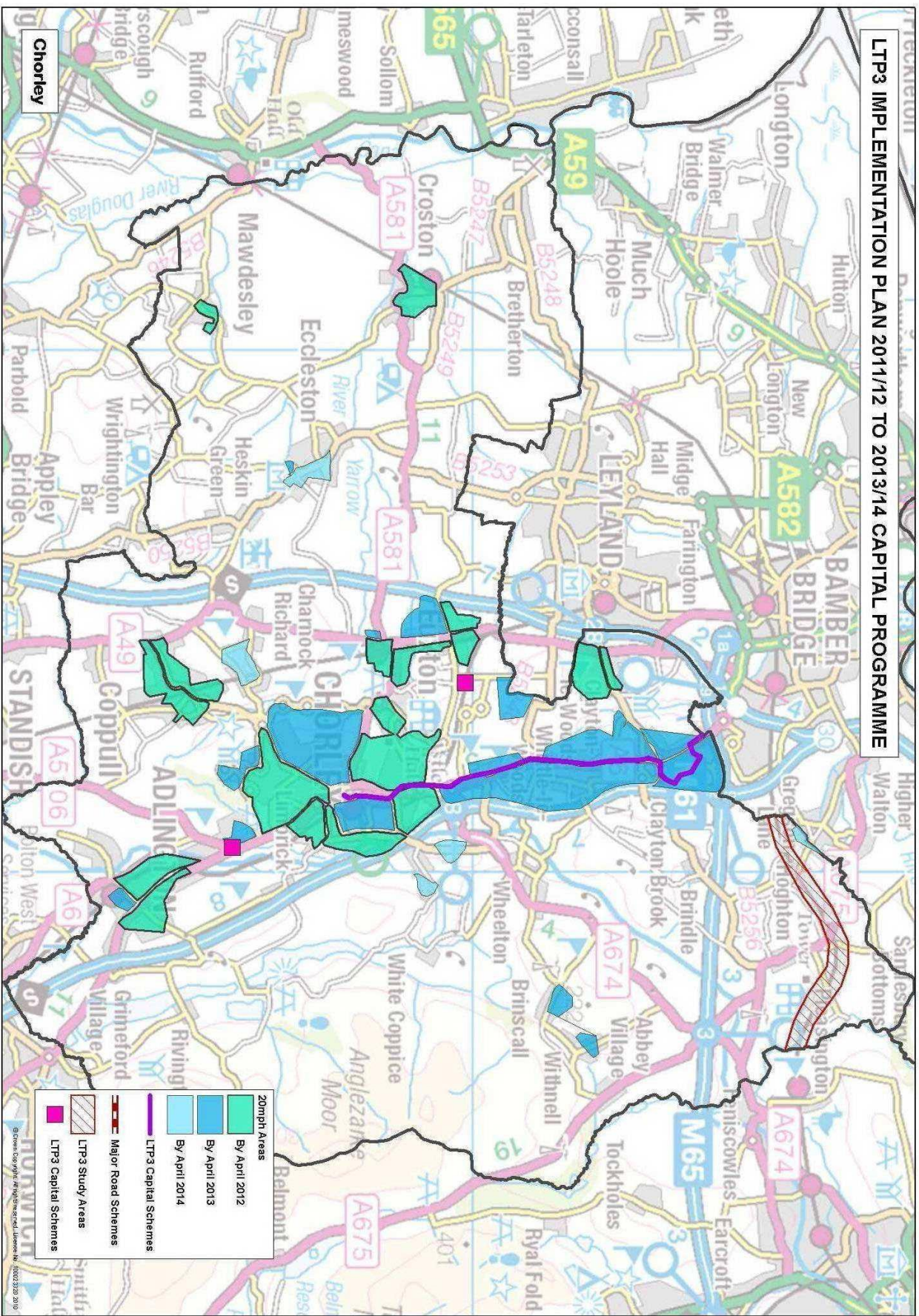
Continued growth here will increase peak hour congestion on the main routes between Chorley and Preston, and the links to the motorway network.

Under this Implementation Plan Lancashire County Council will invest £30.69 million on highways and transport in Chorley, with £9.35 million of capital funding and £21.34 million of revenue support. This will be targeted at:

- promoting public transport connectivity between Chorley and Preston to counter growing congestion and support economic development
- creating better conditions for local journeys within neighbourhoods along key corridors

A key aspect of public transport provision for Buckshaw Village is the construction of the new railway station on the Manchester-Preston line (CH1), funded by developer contributions. This is due to be completed in Autumn of 2011 and will include a park and ride facility with capacity for around 200 cars.

LTP3 IMPLEMENTATION PLAN 2011/12 TO 2013/14 CAPITAL PROGRAMME



© Crown Copyright. All Rights Reserved. Ordnance Survey, 2002/2010

This will also benefit from the improved service and reliability from the electrification of the Manchester and Liverpool to Preston lines and help make rail travel a more attractive option for commuters into Preston, Manchester and Liverpool.

The County Council will continue to provide financial support for the Community Rail Partnership Programme Improvements, in particular the West of Lancashire CRP in Chorley (MA12).

The Preston-Chorley Bus Corridor (MA7) will provide a significant public transport connection for Buckshaw Village and another strategic employment site at Cuerden Green in South Ribble. Proposed bus infrastructure improvements include working in partnership with bus operators to increase punctuality and reliability as well as implementing bus priority measures, junction improvements and complying with measures introduced as part of the Equality Act 2010. Improving the speed and reliability of public transport on this major corridor linking a main economic centre and two strategic employment sites will support the growth of all three, and improve access to employment, training and education for a large number of residents in Central Lancashire.

In order to make more informed decisions about the location and scale of proposed developments around Preston, South Ribble and Chorley a Central Lancashire Traffic Model is being developed (MA2). This will enable the effect of proposed developments on the road network to be better estimated and potential solutions investigated.

Future decisions on infrastructure planning and provision will be based on a Highways and Transport Master Planning exercise to cover Central and West Lancashire (DV3), which will be developed as part of this LTP to establish strategic priorities for the area, in conjunction with work currently underway on the Central Lancashire Local Development Framework Core Strategy.

Improvements to the MOVA software that controls the network of signal junctions between Buckshaw Village and M61 Junction 8 are being funded by developer contributions which have already been received. This work is planned to be delivered in Autumn 2011.

As part of the County Council's commitment to road safety, improvements will be made to the junction between A6 Bolton Road and A5106 Wigan Lane (CH2). There have been 22 casualties at this junction during the past 5 years and the changes are predicted to save an average of 2 personal injury accidents per year. The scheme will also provide better pedestrian links across the A6 and reducing delays to drivers.

Working with Chorley Borough Council and neighbouring authorities, the County Council will develop a programme and means of funding for the provision of electric vehicle charging points at suitable locations to encourage the take-up of low emission vehicles (MA15).

The County Council is committed to supporting smartcard travel concessionary schemes, through its involvement in the NoWcard partnership, with the aim of encouraging greater use of public transport through interoperable ticketing, better integration and simplified discounts and fare structures.

The County Council has made a commitment to introduce 20 mph limits in all residential areas and outside all schools over the lifetime of this Implementation Plan. The map accompanying the local programme for Chorley shows the phased introduction of these schemes to neighbourhoods in Chorley district over the next three years (MA10).

The County Council will promote sustainable travel in Lancaster through education, information and travel planning to reduce demand on the highway and to support economic growth (RV3,7).

To support public transport provision in Chorley and encourage better access to jobs, education and services by alternatives to the car, the County Council will continue to support Chorley Bus Station, provide financial support to key non-commercial bus services (9 currently in Chorley) (RV2), provide concessionary travel (currently 23,594 NoWcards, 2,961 for disabled users and 20,633 for senior citizens) (RV5), support community transport in Chorley through Central Lancs Dial-a-Ride (RV5) and support social care transport (with almost 16,000 journeys undertaken in a typical month in Chorley).